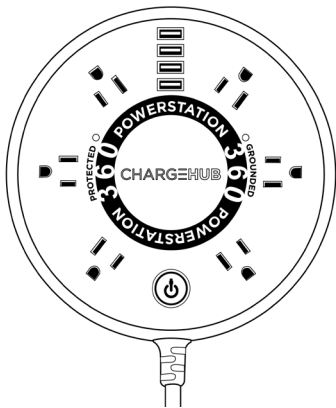


CHARGEHUB™
POWERSTATION360
MULTI-PORT SURGE PROTECTOR



User Manual

Table of Contents

Safety Information.....	1-2
Introduction.....	3
Components.....	4
Setup.....	5-6
Overdraw Protection	7
Changing the Fuse	8-10
Certification.....	11
Recommended Accessories.....	12
Technical Specifications	13
Limited Warranty	14-22
Consumers Rights & Arbitration Agreement	23-25
Copyright Notice.....	26
FCC Notice.....	27

Safety Information

By using the ChargeHub Powerstation 360, you hereby agree that Limitless Innovations, Inc., an Illinois corporation and its affiliates (“Limitless”) shall have no liability for any losses associated with property damage, personal injury or loss of life that are incurred by you or by any third party in connection with or relating in any manner whatsoever to your use of the ChargeHub Powerstation 360. By using the ChargeHub Powerstation 360, you hereby agree at all times to comply fully with all safety warnings, operating instructions and general safety information in this user manual. By using the ChargeHub Powerstation 360, you further agree to hold harmless Limitless, (and Limitless’ officers, directors, shareholders and employees) in connection with any losses sustained by you (including, without limitation, losses arising in whole or in part from property damage, personal injury or loss of life) relating in any manner whatsoever to your use of the ChargeHub Powerstation 360.

SAFETY WARNINGS

- The ChargeHub Powerstation 360 is designed for indoor use only in dry locations. Use with aquariums **VOIDS** all warranties.
- The ChargeHub Powerstation 360 is **NOT** a lightning arrester and will not protect against a lightning strike.
- Do **NOT** plug into another relocatable power tap.

Safety Information cont'd

- Avoid contact between the ChargeHub Powerstation 360 and harsh chemicals.
- Do **NOT** attempt to disassemble or repair the ChargeHub Powerstation 360 or its accessories. Contact Limitless Innovations customer support to return or exchange the product.
- Do **NOT** drop the ChargeHub Powerstation 360. Doing so may damage internal components otherwise not seen and must not be operated.
- Do **NOT** submerge the ChargeHub Powerstation 360 or its accessories in water.
- Do **NOT** insert any foreign objects into the openings or ports of the ChargeHub Powerstation 360.
- Do **NOT** attempt to hang or swing from the Power Cord of the ChargeHub Powerstation 360.
- Do **NOT** open the ChargeHub Powerstation 360 as contents may cause electric shock.
- Keep the ChargeHub Powerstation 360 and its accessories out of reach from children.
- Do **NOT** use third party power supplies or non-approved adapters with the ChargeHub Powerstation 360.
- Do **NOT** replace the fuse of the ChargeHub Powerstation 360 with anything other than what is specified. Fuse Specification: 250V / 10A
- The ChargeHub Powerstation 360 must be plugged directly into the power source and must **NOT** be “daisy-chained” together in a serial fashion with other strips, UPS Battery Backup, surge protectors or extension cords.
- Do **NOT** use two or three-prong adapters with the ChargeHub Powerstation 360.

Introduction

The ChargeHub Powerstation 360 is the ultimate charging solution! The ChargeHub Powerstation 360 provides the ability to charge up to 10 devices at once - including 4 USB Ports, 6 AC Outlets, and up to 4000 Joules of surge protection. Each USB Port utilizes patented SmartSpeed® Technology providing a fast charge for virtually any USB device. Wall Mounting is easy with the provided screws, hanging template, and instructions - a perfect fit for any home, office, dorm room, workshop and more!

Note: The ChargeHub Powerstation 360 may not be compatible with all USB chargeable devices.

WHAT'S INCLUDED:

- 1x ChargeHub Powerstation 360
- 1x Easy-To-Hang Template
- 1x User Manual
- 2x Wall Mounting Screws



Wall Mounting
Screws



User Manual



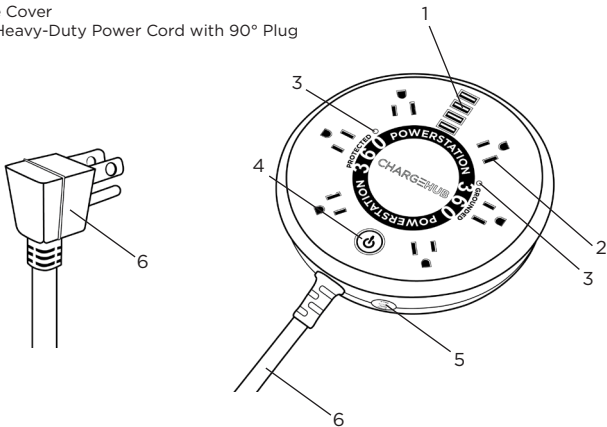
Easy-to-Hang
Template



ChargeHub
Powerstation 360

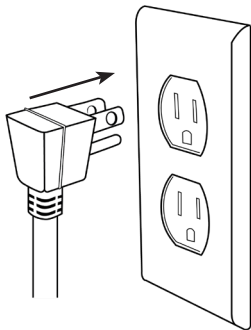
Components

1. USB Charging Ports (Output)
2. 3-Prong Outlets (Output)
3. Indicator Lights
4. Power On / Off Button
5. Fuse Cover
6. 6FT Heavy-Duty Power Cord with 90° Plug



Setup

Plug AC Power Cord into a wall outlet.



NOTE:

Do **NOT** plug into another relocatable power tap.

Press the Power Button to turn on the ChargeHub Powerstation 360.



Setup cont'd

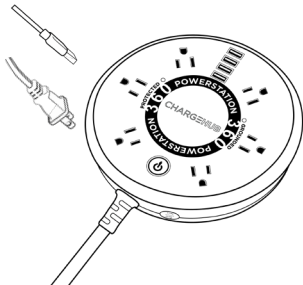
The Protected, Grounded and Power Indicator Lights will illuminate.



NOTE:

1. Always plug the ChargeHub Powerstation 360 into a grounded outlet. If the Grounded Indicator Light does not illuminate, you must switch outlets.
2. If the Protected Indicator Light does not illuminate, contact Limitless Innovations customer support.

Simply plug in a device via AC plug or USB cable to power or charge.



NOTE:

1. The ChargeHub Powerstation 360 is not designed for large appliances such as refrigerators, stoves, washers, dryers, etc.

Overdraw Protection

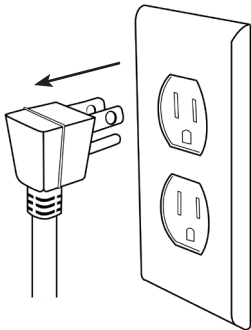
When multiple devices are connected via USB, the ChargeHub Powerstation 360 may, at times, reach its maximum capacity. Once this occurs, the unit will start blinking and connected devices should be temporarily disconnected one by one, until the blinking stops. Once the connected devices consume less power and the blinking stops, the user should wait a short period of time and begin to reconnect the devices, one by one, to resume charging.

Changing the Fuse

Turn the ChargeHub Powerstation 360 off.

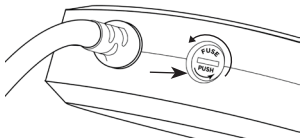


Once all the Indicator Lights are turned off, unplug the ChargeHub Powerstation 360 from the wall outlet.

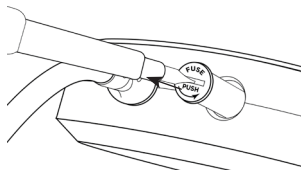


Changing the Fuse cont'd

Use the head of a standard screw driver to push the Fuse Cover in and rotate counterclockwise to release.

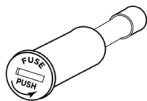


When released, the Fuse Cover will pop out. Simply remove from the ChargeHub Powerstation 360 to access the Fuse.



NOTE:

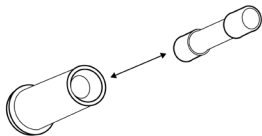
- The Fuse will remain in the cover when removed from the ChargeHub Powerstation 360.



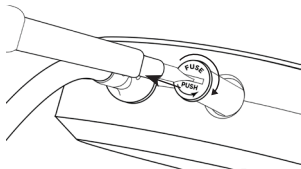
Changing the Fuse cont'd

Pull the Fuse from the cover and replace with a new one.

Fuse Specification: 250V / 10A



Re-insert the Fuse Cover into the ChargeHub Powerstation 360 and use the standard screw driver to push in and rotate clockwise. This will re-engage the Fuse Cover.



Certification

The ChargeHub Powerstation 360 is UL/cUL certified and tested to comply with FCC Standard Part 15 for safety and reliability under the United States and Canadian standards. The ChargeHub Powerstation 360 is compliant with requirements for Energy Efficiency Level VI.

UL/cUL AND FCC NOTICE TO USERS

Users are not permitted to make changes or modify this device or any of its companion products or components in any way. Changes or modifications are considered a safety hazard/risk and will void the warranty.

Recommended Accessories (sold separately)

- CableLinx USB Cables

It is critical to use ChargeHub-branded accessories, only. Use of non-approved ChargeHub-branded Accessories may cause safety hazards and damage your personal electronic devices under charge. For a list of approved ChargeHub-branded accessories, visit our website at: **LimitlessInnovations.com/Shop**

Technical Specifications

Specifications	Powerstation-360	Units
Input Voltage	125	VAC (Volts AC)
Rate Voltage	125/60	VAC / Hz (Volts / Hertz)
Surge Protection	4000	J (Joules)
Max AMP	10	A (Amps)
Total Power Output	1250	W (Watts)
USB Voltage Output	5	VDC (Volts DC)
USB Total AMP Output	5	A (Amps)
Max Current Per Port	2.4	A (Amps)
USB Total Power Output	25	W (Watts)

Limited Warranty

Your use of the product shall at all times require you to comply with all terms, conditions of use, instructions and recommendations set forth within the user manual and the ChargeHub Powerstation 360 Terms and Conditions found at:

Manual: [LimitlessInnovations.com/Manual/ChargeHub-Powerstation-360.pdf](https://www.limitlessinnovations.com/Manual/ChargeHub-Powerstation-360.pdf)

Warranty Terms and Conditions: [LimitlessInnovations.com/Warranty-Terms-and-Conditions/ChargeHub-Powerstation-360](https://www.limitlessinnovations.com/Warranty-Terms-and-Conditions/ChargeHub-Powerstation-360)

Are you having issues with your ChargeHub Powerstation 360 product?
Contact our support team today at:

[LimitlessInnovations.com/Support](https://www.limitlessinnovations.com/Support) or call us at 855-843-4828

Subject to the exclusions contained below, Limitless Innovations, Inc. (“Limitless”) warrants ChargeHub Powerstation 360 to be free from defects in materials and workmanship under normal consumer usage for a period of one (1) year from the date of original purchase, (the “ChargeHub Powerstation 360 Limited Warranty”). As utilized herein, the term “ChargeHub Powerstation 360” shall include all products manufactured and sold by Limitless for use together with, or relating in any manner to the ChargeHub Powerstation 360 including, without limitation, cables, power cables, adapters, and all other products that may be sold by Limitless now or in the future for specific use with the ChargeHub Powerstation 360. As utilized herein the ChargeHub Powerstation 360 shall refer to no products not produced and/or sold by Limitless. This ChargeHub Powerstation 360 Limited Warranty is a consumer’s sole and exclusive remedy regarding any express warranty claim by a consumer.

Limited Warranty cont'd

Exclusions: The ChargeHub Powerstation 360 Limited Warranty shall not apply in the event of the occurrence of any of the following:

1. Normal Wear and Tear. The ChargeHub Powerstation 360 Limited Warranty shall not apply to cover the maintenance, repair and/or replacement of parts or the ChargeHub Powerstation 360 due to normal wear and tear by the consumer.

2. Abuse and Misuse. The ChargeHub Powerstation 360 Limited Warranty shall not cover defects or damage that result in whole or in part from: (a) improper operation, storage, misuse or abuse, accident or neglect by the consumer (including, without limitation, physical damage, cracks, drops and scratches to the ChargeHub Powerstation 360); (b) contact with liquid, water, rain, extreme humidity or heavy perspiration, sand, dirt or the like, extreme heat, or food; (c) use of the ChargeHub Powerstation 360 for commercial purposes; (d) subjecting the ChargeHub Powerstation 360 to abnormal usage or conditions; and/or (d) other acts which are not the sole and absolute fault of Limitless, in whole.

3. Unauthorized Service or Modification. The ChargeHub Powerstation 360 Limited Warranty shall not cover defects or damages resulting in whole or in part from service, testing, adjustment, installation, maintenance, alteration, or modification in any way by someone other than Limitless or its authorized service centers.

4. Altered Products. The ChargeHub Powerstation 360 Limited Warranty shall not cover defects or damages to the ChargeHub Powerstation 360 with (a) serial numbers or date tags that have, at any time, been removed, altered, or obliterated; (b) broken seals or that show evidence of tampering; (c) mismatched board serial numbers; or (d) non-conforming or non-ChargeHub Powerstation 360 housings, or internal components.

Limited Warranty cont'd

5. Not Plugged into Grounded Outlet. The ChargeHub Powerstation 360 limited Warranty shall not cover defects or damage to third party equipment that occurs in whole or in part when ChargeHub Powerstation 360 is not plugged into a grounded outlet. As a condition of any warranty hereunder, all ChargeHub Powerstation 360 surge protectors must be plugged directly into the power source and must not be “daisy-chained” together in a serial fashion with other strips, UPS Battery Backup, surge protectors or extension cords. A three-prong or two-prong adaptor may not be used.

CONNECTED EQUIPMENT LIMITED WARRANTY

The ChargeHub Powerstation 360 Limited Warranty shall also include the Connected Equipment Limited Warranty. The Connected Equipment Limited Warranty shall be considered a part of the ChargeHub Powerstation 360 Limited Warranty.

Limitless (or its agent or insurer) will repair or replace at its sole option any equipment which is subject to damage caused in whole by a transient voltage surge/spike caused in whole by the ChargeHub Powerstation 360, (the “**Connected Equipment Limited Warranty**”). As a condition precedent to any claim under the Connected Equipment Limited Warranty, the damage must have occurred to connected equipment while properly connected through a ChargeHub Powerstation 360 surge protector to a wired AC power line with protective ground.

Limited Warranty cont'd

As a condition precedent to Limitless' obligation to honor, pay and/or replace connected equipment in accordance with any claim under the Connected Equipment Limited Warranty, the following conditions precedent (the "Conditions Precedent") must have been satisfied:

- (a) You must provide Limitless with notice of your claim within 15-days of the occurrence that gave rise to the damage to your equipment which notice must set forth the exact date of the occurrence giving rise to the damage;
- (b) You must first fully exhaust all efforts to seek reimbursement from your homeowner's insurance policy and renter's insurance policy in connection with equipment that is subject to damage caused in whole by the transient voltage surge/spike and provide to Limitless: (i) a copy of your written demand for insurance coverage that was sent to the insurance carrier and (ii) a copy of the written response for the insurance company(s) denying coverage;
- (c) You must provide Limitless with an original copy of the invoice showing your purchase price of the damaged equipment;
- (d) You must provide Limitless with the date of your original purchase of the damaged equipment together with a serial number of the damaged equipment and the location and party from whom you originally purchased the damaged equipment; and
- (e) You must provide in writing as part of any claim a detailed written description of the damage caused to the connected equipment together with photographs of the damaged equipment and a diagram demonstrating how the connected equipment was connected to the ChargeHub Powerstation 360;

Limited Warranty cont'd

The Connected Equipment Limited Warranty is void in the event a warranty claimant fails to satisfy each of the Conditions Precedent listed on page 17.

This Connected Equipment Limited Warranty does not apply to damaged equipment: (a) not purchased directly from a retailer or (b) purchased by the warranty claimant as second-hand equipment.

This Connected Equipment Limited Warranty is limited to losses not covered by any available homeowner's insurance policy and/or renter's insurance policy carried in whole or in part by any party making a warranty claim under the Connected Equipment Limited Warranty.

As part of the Connected Equipment Limited Warranty, Limitless will spend, to repair or replace the damaged connected equipment, at Limitless' sole option, an amount equal to the fair market value of the damaged equipment or the original purchase price of the equipment, whichever is less, up to the maximum amount of [\$75,000].

The fair market value of the equipment shall be the current value of the equipment specified in the most recent edition of the Orion Blue Book by Orion Research Corporation, Roger Rohrs Publisher, or such other amount reasonably determined by Limitless.

Limited Warranty cont'd

All shipping costs on sending the ChargeHub Powerstation 360 surge protectors and/or the connected damaged equipment to Limitless shall be borne solely by the purchaser damage claimant. Limitless reserves the right to review the damaged surge protector, the damaged equipment and the site where the damage occurred as well as the right to negotiate the repair costs. If Limitless determines that it is impractical to ship the damaged equipment to Limitless, in its discretion, Limitless may designate a repair facility to inspect and estimate the cost to repair such equipment. Damaged equipment must remain available for inspection until the claim is finalized. Whenever claims are settled, Limitless reserves the right to be subrogated under any existing insurance policies that claimant may have.

This Connected Equipment Limited Warranty is **NULL AND VOID** if:

- (a) The ChargeHub Powerstation 360 surge protector in use during the alleged event giving rise to alleged damage (the "occurrence") is not provided to Limitless for inspection upon Limitless' request at the sole expense of the Purchaser; or
- (b) Limitless determines that the ChargeHub Powerstation 360 surge protector has been improperly installed, or that the damage did not result from use of the ChargeHub Powerstation 360; or
- (c) Limitless determines, in its sole discretion, that the connected equipment was not used under normal operating conditions or in accordance with any labels safety warnings or instructions; or
- (d) If you are using only the AC surge protector and a power disturbance damages your equipment through the phone, network or coaxial lines.

Limited Warranty cont'd

The Connected Equipment Limited Warranty only protects against damage to properly connected equipment where Limitless determines, in its sole and absolute discretion, that the damage resulted from an occurrence, and does not protect against acts of God such as flood, earthquake, war, vandalism, theft, normal user wear and tear, erosion, depletion, damage due to low voltage disturbances, non-authorized use, or system equipment modification.

In no event shall Limitless be liable under the Connected Equipment Limited Warranty for incidental, special, direct or indirect, consequential or multiple damages such as, but not limited to loss of business or profits arising out the sale or use of any ChargeHub Powerstation 360 surge protector, even if advised of the possibility of such damages.

WHO IS COVERED?

This warranty extends only to the first consumer purchaser of the ChargeHub Powerstation 360 and is not transferable to any third party nor applicable to any subsequent owner other than the first consumer purchaser.

HOW ARE CLAIMS RESOLVED?

If Limitless determines, in its sole and absolute discretion, that a claim is subject to the ChargeHub Powerstation 360 Limited Warranty, it will, at its sole option either: repair or replace the ChargeHub Powerstation 360 or alternatively, it will, in its discretion, refund the purchase price of the ChargeHub Powerstation 360. The ChargeHub Powerstation 360 replacement will be with a functionally equivalent reconditioned / refurbished / pre-owned or new ChargeHub Powerstation 360 or part.

For additional information, visit us at:

Limitlessinnovations.com/Support or call us at 855-843-4828

Limited Warranty cont'd

WHO DO I CONTACT TO MAKE A CLAIM?

In the event of any warranty claim under the ChargeHub Powerstation 360 Limited Warranty, you can contact the telephone number below or provide a written correspondence to the address below at which time and in response thereto, you will receive instructions on how to ship any ChargeHub Powerstation 360 Product at your expense, to a Limitless authorized repair center. To obtain service, you must include: (a) a copy of your receipt, bill of sale or other comparable proof of purchase; (b) a written description of the problem; (c) the name of your service provider, if applicable; and (d) your mailing address, email address and telephone number.

Mailing Address (Please call 855-843-4828 first to obtain RMA #)

Limitless Innovations, Inc. | 4800 Metalmaster Way | McHenry, IL 60050

WHAT OTHER LIMITATIONS ARE THERE?

ANY WARRANTY CLAIM SHALL BE LIMITED TO LIMITLESS INNOVATIONS, INC.'S COST OF MATERIAL ON THE CHARGEHUB POWERSTATION 360 PRODUCT DETERMINED TO HAVE A MANUFACTURER'S DEFECT. IN NO EVENT SHALL LIMITLESS INNOVATIONS, INC. BE LIABLE TO ANY PARTY FOR ANY LABOR COSTS OR ANY OTHER DIRECT, INDIRECT, CONSEQUENTIAL, INCIDENTAL OR SPECIAL DAMAGES, WHETHER IN CONTRACT OR TORT AND EXPRESSLY DISCLAIMS LIABILITY FOR ANY DAMAGES OF ANY KIND ARISING UNDER ANY THEORY OF LAW WHATSOEVER. THE PERFORMANCE OF THE CHARGEHUB POWERSTATION 360 PRODUCT DEPENDS ON THE PURCHASER'S ADHERENCE TO MANUFACTURER PRODUCT INSTRUCTIONS AND LIMITLESS INNOVATIONS, INC. WILL NOT BE RESPONSIBLE TO PURCHASER FOR ANY DEVIATIONS THEREFROM. SOME STATES DO NOT ALLOW THE EXCLUSION OR LIMITATION OF INCIDENTAL OR CONSEQUENTIAL DAMAGES, SO THE ABOVE

Limited Warranty cont'd

LIMITATION OR EXCLUSION REGARDING INCIDENTAL OR CONSEQUENTIAL DAMAGES MAY NOT APPLY TO YOU. ALL IMPLIED WARRANTIES, INCLUDING, WITHOUT LIMITATION, THE IMPLIED WARRANTY OF MERCHANTABILITY AND THE IMPLIED WARRANTY OF FITNESS FOR A PARTICULAR PURPOSE SHALL EXPIRE ON THE DATE WHICH IS 1 YEAR FROM THE DATE OF FIRST PURCHASE OF THE CHARGEHUB POWERSTATION 360 BY THE CONSUMER. SOME STATES DO NOT ALLOW LIMITATIONS ON HOW LONG AN IMPLIED WARRANTY LASTS, SO THE ABOVE LIMITATION MAY NOT APPLY TO YOU. WITH RESPECT TO THAT PERIOD OF TIME BEYOND THE CHARGEHUB POWERSTATION 360 1 YEAR LIMITED WARRANTY PERIOD, LIMITLESS INNOVATIONS, INC. DISCLAIMS AND FURTHER MAKES NO WARRANTY OF ANY KIND, EXPRESS OR IMPLIED, INCLUDING BUT NOT LIMITED TO, ANY WARRANTY OF MERCHANTABILITY OR WARRANTY OF FITNESS FOR A PARTICULAR PURPOSE.

PLEASE NOTE THAT THIS CHARGEHUB POWERSTATION 360 LIMITED WARRANTY GIVES YOU SPECIFIC LEGAL RIGHTS, AND YOU MAY ALSO HAVE OTHER RIGHTS WHICH VARY FROM STATE TO STATE.

NATIONAL STATUTORY RIGHTS

CONSUMERS IN SOME JURISDICTIONS MAY HAVE LEGAL RIGHTS UNDER APPLICABLE NATIONAL LEGISLATION GOVERNING THE SALE OF CONSUMER GOODS, INCLUDING, WITHOUT LIMITATION, NATIONAL LAWS IMPLEMENTING EC DIRECTIVE 99/44. THESE RIGHTS ARE NOT AFFECTED BY THE WARRANTIES IN THIS LIMITED WARRANTY.

Consumer Rights & Arbitration Agreement

YOUR USE OF CHARGEHUB POWERSTATION 360 SHALL BE GOVERNED BY THIS CONSUMER RIGHTS AND ARBITRATION AGREEMENT, ("AGREEMENT"). THIS AGREEMENT AFFECTS YOUR LEGAL RIGHTS AND REMEDIES BY PROVIDING THAT DISPUTES BETWEEN YOU AND THE MANUFACTURER OF THIS PRODUCT, LIMITLESS INNOVATIONS, INC., AN ILLINOIS CORPORATION ("LIMITLESS"), MUST BE RESOLVED THROUGH BINDING ARBITRATION, RATHER THAN IN A COURT. PLEASE READ THIS AGREEMENT CAREFULLY AS YOU ACCEPT THE TERMS OF THIS AGREEMENT BY RETAINING THE PRODUCT(S) PURCHASED IN CONNECTION WITH THIS AGREEMENT ("PRODUCT") FOR MORE THAN FOURTEEN (14) DAYS. IF YOU DO NOT AGREE TO THE TERMS OF THIS AGREEMENT AND YOU PURCHASED THE PRODUCT DIRECT FROM LIMITLESS (VIA WEB OR TELEPHONE), CALL 855-843-4828 TO COORDINATE THE RETURN THE PRODUCT TO LIMITLESS WITHIN FOURTEEN (14) DAYS OF RECEIPT AT NO COST TO YOU. IF YOU PURCHASED THE PRODUCT ELSEWHERE, WITHIN FOURTEEN (14) DAYS OF PURCHASE YOU MUST CALL 855-843-4828 AND THEN, ALSO WITHIN THIS SAME FOURTEEN (14) DAY PERIOD, RETURN THE PRODUCT TO THE POINT OF PURCHASE. FOR ANY QUESTIONS RELATED TO THE ABOVE, PLEASE CALL 855-843-4828.

Consumer Rights & Arbitration Agreement cont'd

RESOLUTION OF CLAIMS OR DISPUTES

Any claim or dispute between you and Limitless arising out of or relating in any way to the ChargeHub Powerstation 360 or this Agreement shall be resolved through final, binding arbitration. This arbitration obligation applies regardless of whether the claim or dispute involves a tort, fraud, misrepresentation, product liability, negligence, violation of a statute, or any other legal theory. Both you and Limitless specifically acknowledge and agree that you waive your right to bring a lawsuit based on such claims or disputes and to have such lawsuit resolved by a judge or jury.

LIMITATION OF LEGAL REMEDIES

All arbitrations under this Agreement shall be conducted only on an individual (and not a class-wide) basis and an arbitrator shall have no authority to award class-wide relief. You acknowledge and agree that this Agreement specifically prohibits you from commencing arbitration proceedings as a representative of others or joining in any arbitration proceedings brought by any other person.

ARBITRATION PROCEDURES

Before commencing any arbitration proceedings under this Agreement, you must first present the claim/dispute to Limitless by calling 855-843-4828, providing requested contact information and allowing Limitless the opportunity to resolve it. If your claim or dispute is not resolved within sixty (60) days, you may commence arbitration proceedings in accordance with the terms of this Agreement.

Consumer Rights & Arbitration Agreement cont'd

The arbitration of claim(s)/dispute(s) under this Agreement shall be pursuant to the American Arbitration Association's ("AAA") United States Commercial Dispute Resolution Procedures and Supplementary Procedures for Consumer-Related Disputes (see www.adr.org for their rules and procedures).

The arbitration of any claim/dispute under this Agreement shall be in the State of Illinois or the location in which you received this Agreement.

All administrative expenses of arbitration proceedings under this Agreement shall be divided equally between you and Limitless, except that: (a) if the claim/dispute subject to the arbitration proceedings is less than ten thousand dollars (US\$10,000), you will be responsible for no more than one hundred twenty-five dollars (US\$125) in administrative expenses; (b) if the claim or dispute subject to the arbitration proceedings is more than ten thousand dollars (US\$10,000), but less than seventy-five thousand dollars (US\$75,000), you will be responsible for no more than three hundred seventy-five dollars (US\$375) in administrative expenses; and (c) if the claim/dispute subject to the arbitration proceedings is more than seventy-five thousand dollars (US\$75,000), then you will be responsible for administrative expenses in accordance with the Commercial Fee Schedule provided by the AAA. You acknowledge and agree that each party shall pay the fees and costs of its own counsel, experts and witnesses.

CHOICE OF LAW & SEVERABILITY

This Agreement shall be governed by the United States Federal Arbitration Act and the laws of the state of Illinois. If any provision of this Consumer Rights and Arbitration Agreement is declared or found to be unlawful, unenforceable or void, such provision will be ineffective only to the extent that it is found unlawful, unenforceable or void and the remainder shall remain fully enforceable.

Copyright Notice

All ChargeHub products and information shared in this manual are protected by copyright. Copying, reproducing, reverse engineering or distributing any information of ChargeHub-related products hardware or software without a formal and written authorization and license from Limitless Innovations, Inc. is prohibited and may result in legal action to the full extent of the law.

FCC Notice

“This device complies with Part 15 of the FCC Rules. Operation is subject to the following two conditions: (1) this device may not cause harmful interference, and (2) this device must accept any interference received, including interference that may cause undesired operation.”

“**WARNING:** Changes or modifications to this unit not expressly approved by the party responsible for compliance could void the user’s authority to operate the equipment.”

“**NOTE:** This equipment has been tested and found to comply with the limits for a Class B digital device, pursuant to Part 15 of the FCC Rules. These limits are designed to provide reasonable protection against harmful interference in a residential installation. This equipment generates, uses and can radiate radio frequency energy and, if not installed and used in accordance with the instructions, may cause harmful interference to radio communications.”

However, there is no guarantee that interference will not occur in a particular installation. If this equipment does cause harmful interference to radio or television reception, which can be determined by turning the equipment off and on, the user is encouraged to try to correct the interference by one or more of the following measures:

- Reorient or relocate the receiving antenna.
- Increase the separation between the equipment and receiver.
- Connect the equipment into an outlet on a circuit different from that to which the receiver is connected. Consult the dealer or an experienced radio/TV technician for help.

CHARGE**HUB**[™]
POWERSTATION360
MULTI-PORT SURGE PROTECTOR

All rights reserved. ChargeHub Powerstation 360 is a trademark of Limitless Innovations, Inc. Design and specifications subject to change without notice. All other trademarks included herein are property of their respective owners. Cable adapters sold separately. Electronic devices not included.

Innovated in USA | Made in China

Phone: (855) 843-4828 | Email: Support@LimitlessInnovations.com

Website: LimitlessInnovations.com

© Limitless Innovations, Inc.